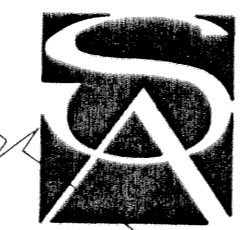


# BOCA QUAY - PHASE III

A REPLAT OF A PORTION OF BOCA QUAY  
AS RECORDED IN PLAT BOOK 68, PAGE 63  
OF THE PUBLIC RECORDS OF PALM BEACH COUNTY, FLORIDA  
LOCATED IN SECTION 4, TOWNSHIP 47 SOUTH, RANGE 43 EAST  
CITY OF BOCA RATON - PALM BEACH COUNTY - FLORIDA

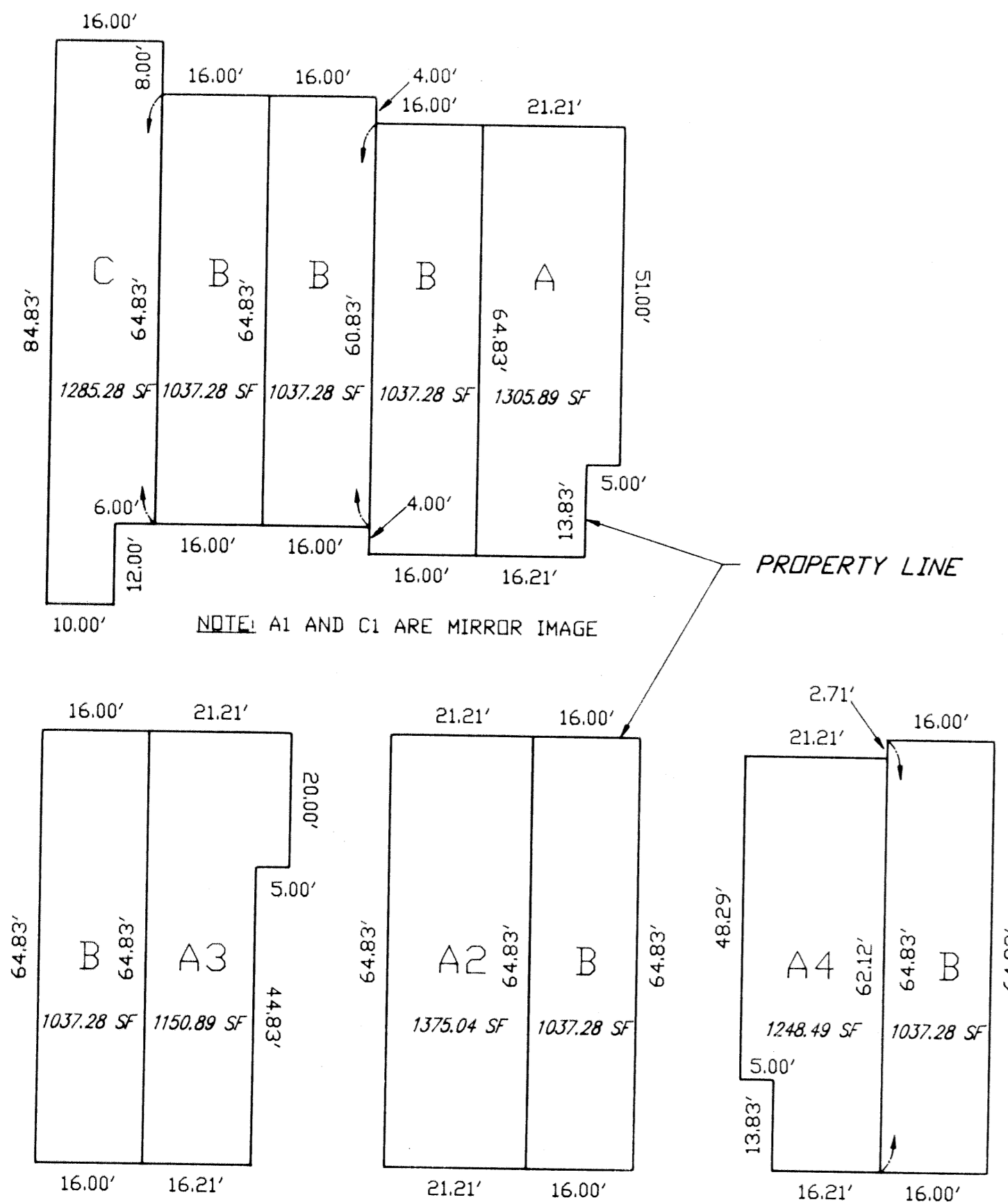
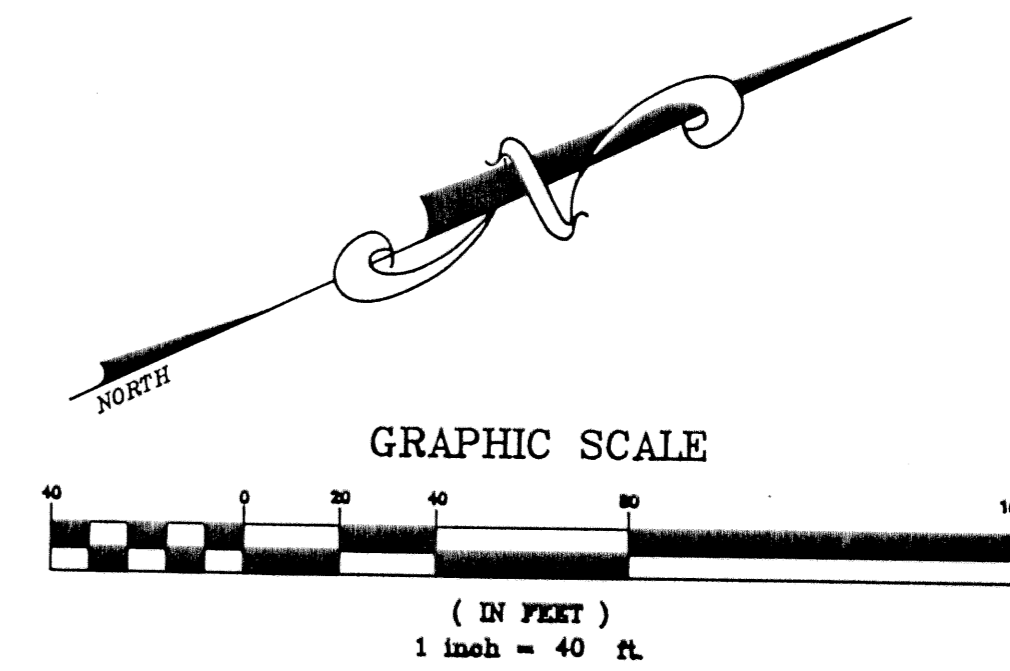


**SHEREMETA ASSOCIATES, INC.**  
CONSULTING ENGINEERS  
Land planning • engineering • surveying  
101 S.E. 6th Avenue • Delray Beach, Florida 33483 • (407)276-7300  
© 1995, SHEREMETA ASSOCIATES, INC.

SHEET 2 OF 2

**61**

STATE OF FLORIDA  
COUNTY OF PALM BEACH  
THIS PLAT WAS FILED FOR  
RECORD AT \_\_\_\_\_ M. THIS  
199\_\_ DAY OF \_\_\_\_\_  
AND DULY RECORDED  
IN PLAT BOOK No. \_\_\_\_\_  
ON PAGE \_\_\_\_\_  
DOROTHY H. WILKEN  
CLERK CIRCUIT COURT  
BY: \_\_\_\_\_ D.C.



TYPICAL LOT DIMENSIONS  
SCALE: 1" = 20'

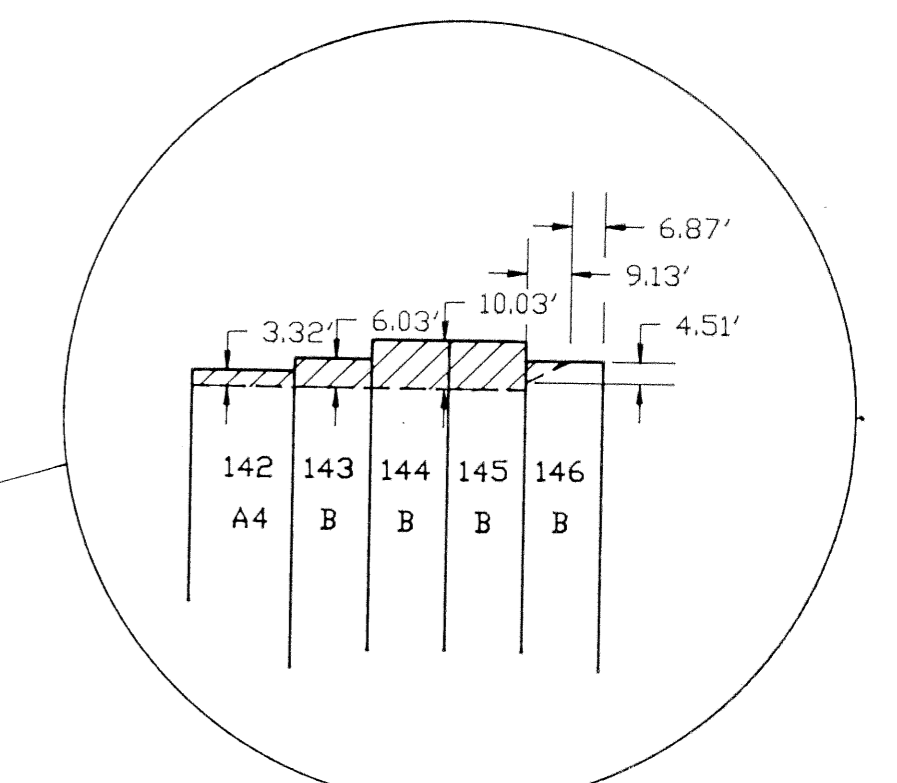
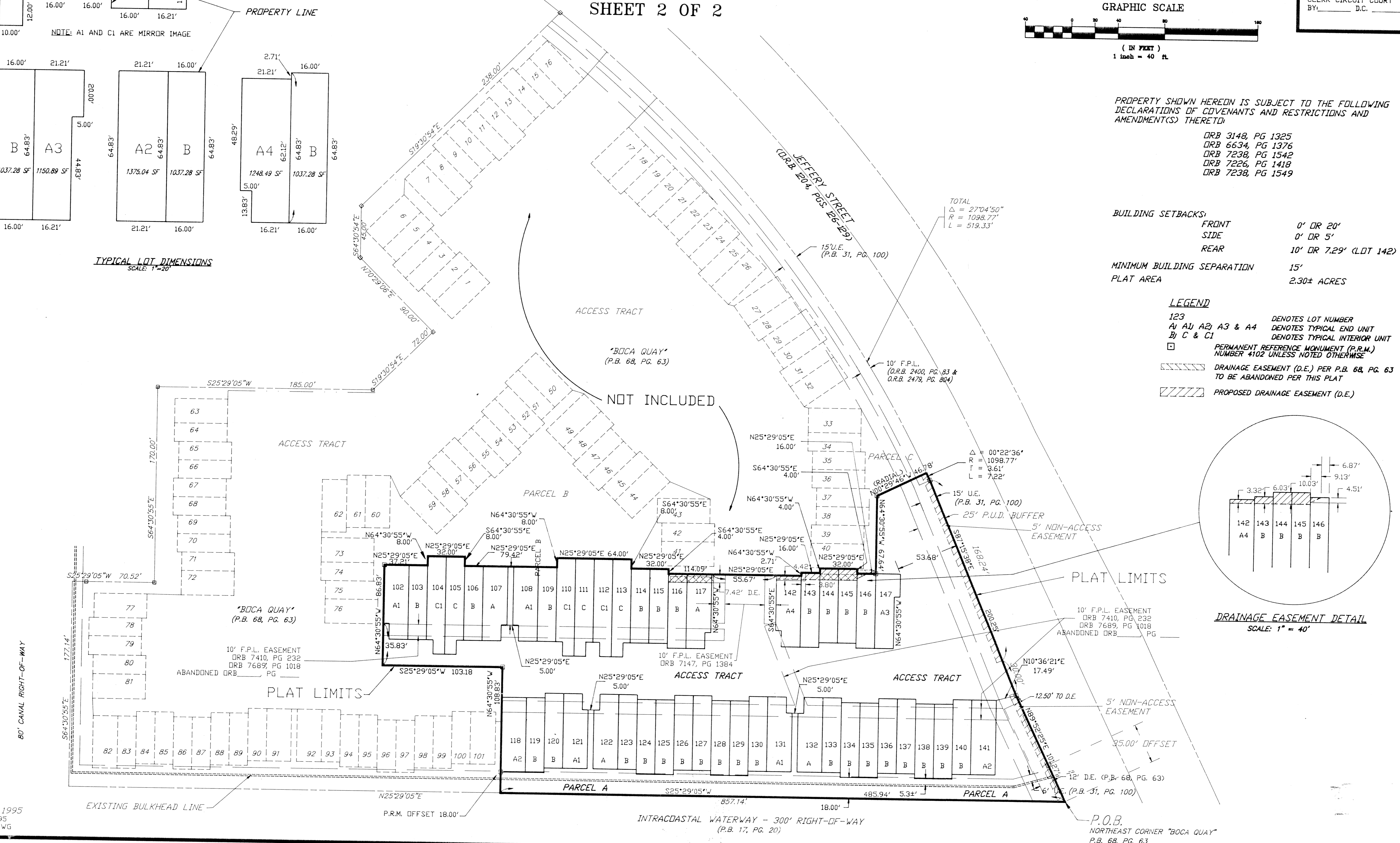
PROPERTY SHOWN HEREIN IS SUBJECT TO THE FOLLOWING  
DECLARATIONS OF COVENANTS AND RESTRICTIONS AND  
AMENDMENT(S) THERE TO:

- DRB 3148, PG 1325
- DRB 6634, PG 1376
- DRB 7238, PG 1542
- DRB 7226, PG 1418
- DRB 7238, PG 1549

**BUILDING SETBACKS:**  
FRONT 0' OR 20'  
SIDE 0' OR 5'  
REAR 10' OR 7.29' (LOT 142)

**MINIMUM BUILDING SEPARATION** 15'  
**PLAT AREA** 2.30± ACRES

- LEGEND**
- 123 DENOTES LOT NUMBER
  - A1 A2 A3 & A4 DENOTES TYPICAL END UNIT
  - B, C & C1 DENOTES TYPICAL INTERIOR UNIT
  - PERMANENT REFERENCE MONUMENT (P.R.M.) NUMBER #102 UNLESS NOTED OTHERWISE
  - //// DRAINAGE EASEMENT (D.E.) PER P.B. 68, PG. 63 TO BE ABANDONED PER THIS PLAT
  - //// PROPOSED DRAINAGE EASEMENT (D.E.)



DRAINAGE EASEMENT DETAIL  
SCALE: 1" = 40'

SUBDIVISION Boca Quay  
 BOOK 77 FLOOD MAP #  
 FLOOD ZONE ZONING  
 ZIP CODE  
 CITY OF Boca Raton

DECEMBER 22, 1995  
 NOVEMBER 30, 1995  
 190134\III\_PLAT.DWG